



**GLOBAL EDUCATION PROJECT**  
*Professional Learning Initiative*

**503 Burke Rd,  
Camberwell South  
3124**

**Ph: 9824 8355  
Fax: 9824 8295**

**Email:  
geo@gtav.asn.au  
or  
ged@gtav.asn.au**



Geography Teachers' Association of Victoria Inc. ABN 65 550 382 751

This project is funded by the Australian Government's Overseas Aid Program.



# GLOBAL EDUCATION

***A FULLY-FUNDED  
PROFESSIONAL LEARNING  
INITIATIVE FOR TEACHERS***

Ph: 9824 8318  
Fax: 9824 8295



# The Global Education Project

## WHO ARE WE?

*The Global Education Project Victoria offers a **FREE** consultancy service to all schools throughout Victoria. A staff workshop can be organised introducing the five key learning emphases through a range of engaging activities. You will be provided with resources on a range of topics and issues to assist with planning for student learning. This is a fully-funded initiative which includes **FREE** resources for your school.*

- Learn how to incorporate global perspectives into units of work and across all subjects
- Add value to existing units or plan new units which encourage students to become informed, skilful and **ACTIVE** global citizens
- Help your staff become more globally aware
- Prepare teachers for school overseas travel

## global perspectives: education for a better world

### WHY INTRODUCE A GLOBAL PERSPECTIVE?

You and your students live in a world interconnected by cultural, economic, political, social and environmental concerns.

Let us help you to guide your students to become globally engaged citizens who are ready, willing and able to act for a better world.

### CONNECT TO CURRICULUM

Global education can be integrated across all subjects and the Australian Curriculum including the domains of Geography, Civics and Citizenship, History, Science, Health, English and Economics. We can assist you in developing and extending integrated units of work whilst meeting the current curriculum guidelines.



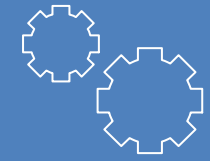
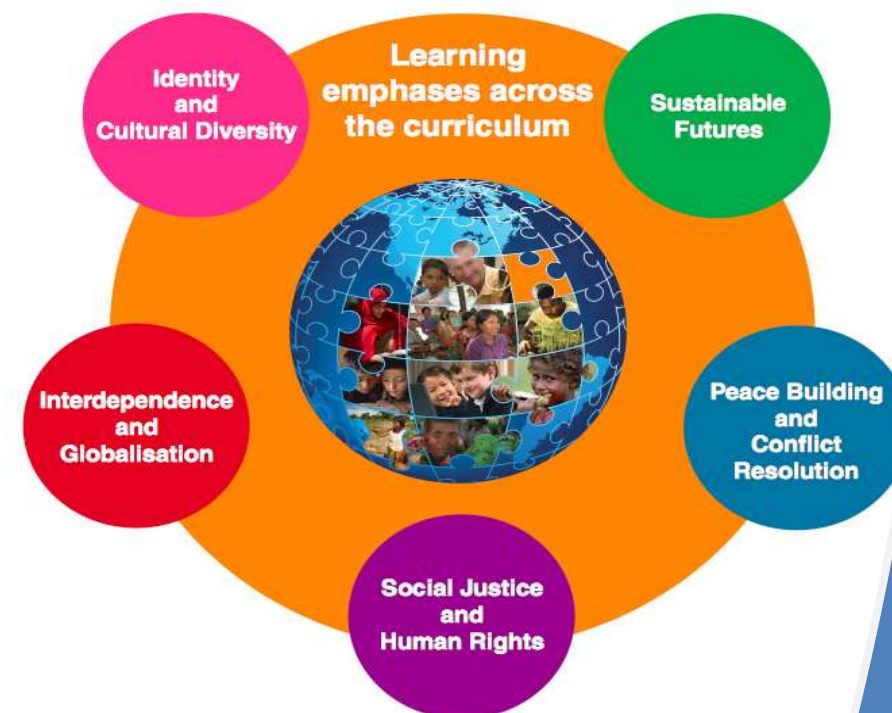
### TESTIMONIALS

*“The Global Education Project’s practical and ‘hands on’ activities provided real insight into the challenges facing children in developing countries regarding accessing clean water. An excellent springboard for valuable classroom discussion and further investigation.”*  
Tintern Schools

*“The Global Education Project provided informative and engaging PD for our team. We were introduced to a variety of activities that we could use in the classroom straight away. The resources we were given were great and also provided us with information on the importance of global education for our students”.*  
Flemington Primary School

### THE 5 KEY LEARNING EMPHASES

There are five key learning emphases that underpin global education



- **ENHANCE** current integrated curriculum by incorporating global perspectives.
- **EXPERIENCE** global education through a range of engaging activities.
- **EXPLORE** global issues using a multi-disciplinary approach .
- **EXTEND** students’ thinking and knowledge about global and development issues
- **ENABLE** students to plan and take action as discerning global citizens.

