

---

# Caught in the Web!

---

## The importance of Food Webs.



**Welcome to Serendip Sanctuary - A Place of Discovery!  
Use this booklet to discover the importance of Food  
Webs and your place in them. Things to do and  
questions to answer can be found in the shaded boxes.**

**1) Solar Powered Planet**

**Feel the SUN on your face!**

This planet is SOLAR POWERED, sunlight allows life to exist and provides energy to the earth.

**Look around and find something that has soaked up some sunlight!**

**SUN**

**2). The Food Makers - Plants**

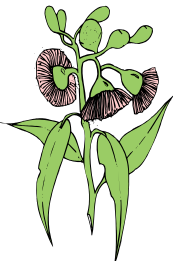
Plants are always soaking up sunlight and using to make FOOD. They are the only living things that can do this!

**How many different plants can you see?**

**How big is the biggest?**

**How small is the smallest?**

**PLANTS**



**3) Powered by Plants**

Plants are eaten by animals, some small, some big.

**Look on plant leaves or stems for “teeth” marks of plant eaters and draw one that you see.**

***Minibeasts***



Many **INVERTEBRATES** are plant eaters, so see if you can find some using the pictures below as a guide. Circle the ones you find.

Caterpillar



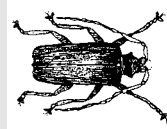
Millipede



Slater



Beetle



Moth



# HERBIVORES

## *Megabeasts*

Large animals like birds and mammals can also be plant eaters.



What big animals can you spot that eat plants?

What types of plants do they eat?

## 4). At the Top - MEAT EATERS!

Plant munchers watch out, the MEAT Eaters are coming!

On the walk look out for Bustards and Brolgas. These birds are carnivores, they need to eat other animals.

What sort of animals do Bustards and Brolgas eat?

# CARNIVORES



# **Congratulations, you've just completed a food chain. Now lets look at a WETLAND example.**

## **5). Wetlands & the Struggle of Life**

Wetlands are one the Earth's most important LIFE SUPPORT SYSTEMS!  
There are many different types of wetlands, each with its own food chain.

**How many different wetlands are shown on the board?**

## **6). Wetlands & the cycle of Drought and Flood**

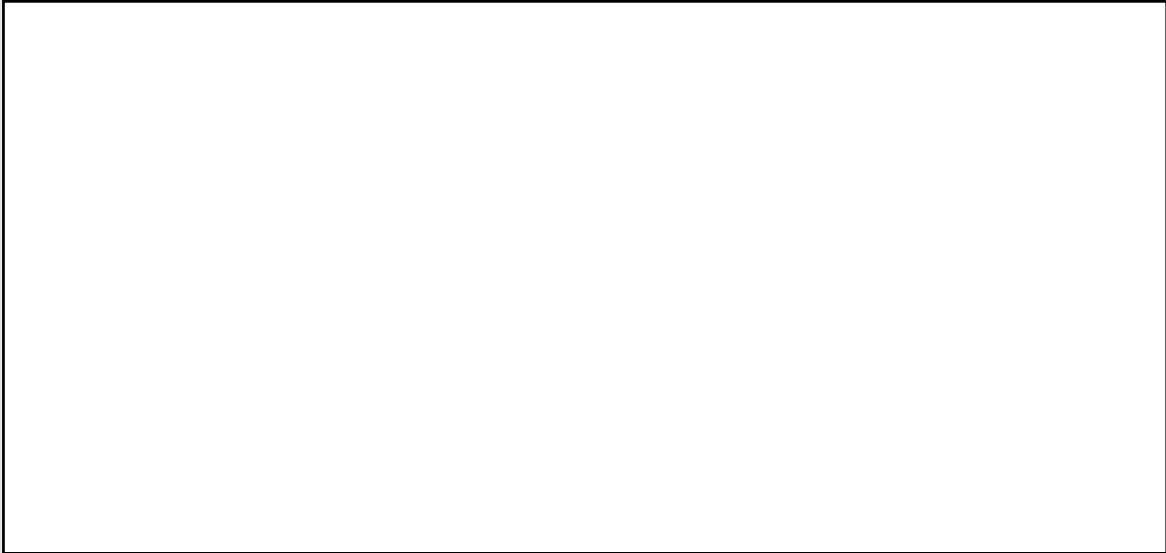
Wetland food chains depend on a pattern of drying and flooding if they are to exist.

**Why is this cycle of drying and flooding so important?**

## **7). A Web, Not a Chain**

We often talk of a food chain, but it is more like a WEB than a chain, with connections going in all directions in a never ending cycle.

**Look out over the Marsh and Lake. Based on the plants and animals present try and draw a FOOD WEB showing who eats who.**



**8) The World Wide Web of LIFE**

The World Wide Web of Life connects all living things on Earth, past, present and future. A wetland food web is just a small part of the World Wide Web of Life.

**Why are plants so important in the Web of Life?**

**Which living things are CONSUMERS (Circle your choices)**

**Pond Weed, Mosquito Wiggler, Fish, Hawk**

**What do DECOMPOSERS do?**

**9). Natural Cycles - How Humans Fit**

The activities of humans have been tied to natural cycles for thousands of years.

**What was one way aborigines used natural cycles to their advantage?**



**10). Breaking the Web**

Recent human activities have often damaged many natural cycles.

**What happens to the plants and animals in a food web if part or all of their habitat is destroyed?**

**BACK AT SCHOOL**  
**Draw the Food Web you are a part of.**